



Mettawee Messenger

March 4, 2021 Principal: Brooke DeBonis 645-9009

Principal's Corner:

The Mettawee School Board would like your help!

The Mettawee School Board has started a process to set educational goals for our children that will guide our school's operations in the years ahead. To complete this work, the Board needs to hear from all the stakeholders of our community: educators, former students, residents, seniors, community leaders and most importantly, the parents of our children.

The link below takes you to a brief survey. We would like to hear your thoughts on the skills and values we hope to develop for your children during their time at Mettawee, before they move on to secondary school. The Board is also looking for your input on how they can be more effective in keeping you informed about our school. Please note that the link will be operational through Monday, March 8th.

[community survey link](#)



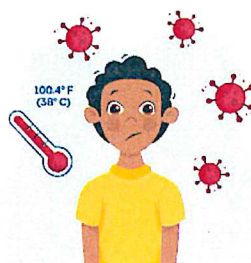
VIRTUAL ALL SCHOOL MEETING!

We are so excited to announce that we will be bringing back **All School Meeting** - **virtually** - **once a month**.

The first meeting will be March 12th 2:00-2:20. A link will be emailed Friday morning so please be looking for it. Classroom teachers will be sending reminders to Distance Learning students. If you would like to mark your calendars for future dates, the next one will be April 30th, and another on May 21st.



We can't wait to all be "together again!"



If you find that you are running out of **lavender screening sheets** please reach out so we can send more home with your child.

You can either email Cheryl Chalmers at cchalmers@brsu.org or Heidi Hammell at hhammell@brsu.org.



Mettawee Messenger

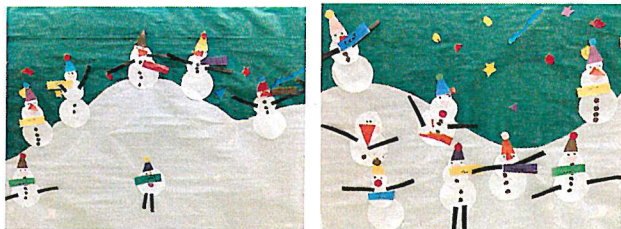
March 4, 2021 Principal: Brooke DeBonis 645-9009



When the snow is crusty it makes a great canvas!



We had some pretty great snowballs on the playground before break!



Preschool made a perfect little snowman community!



Can you believe it was warm enough in February to have Art Class outside?

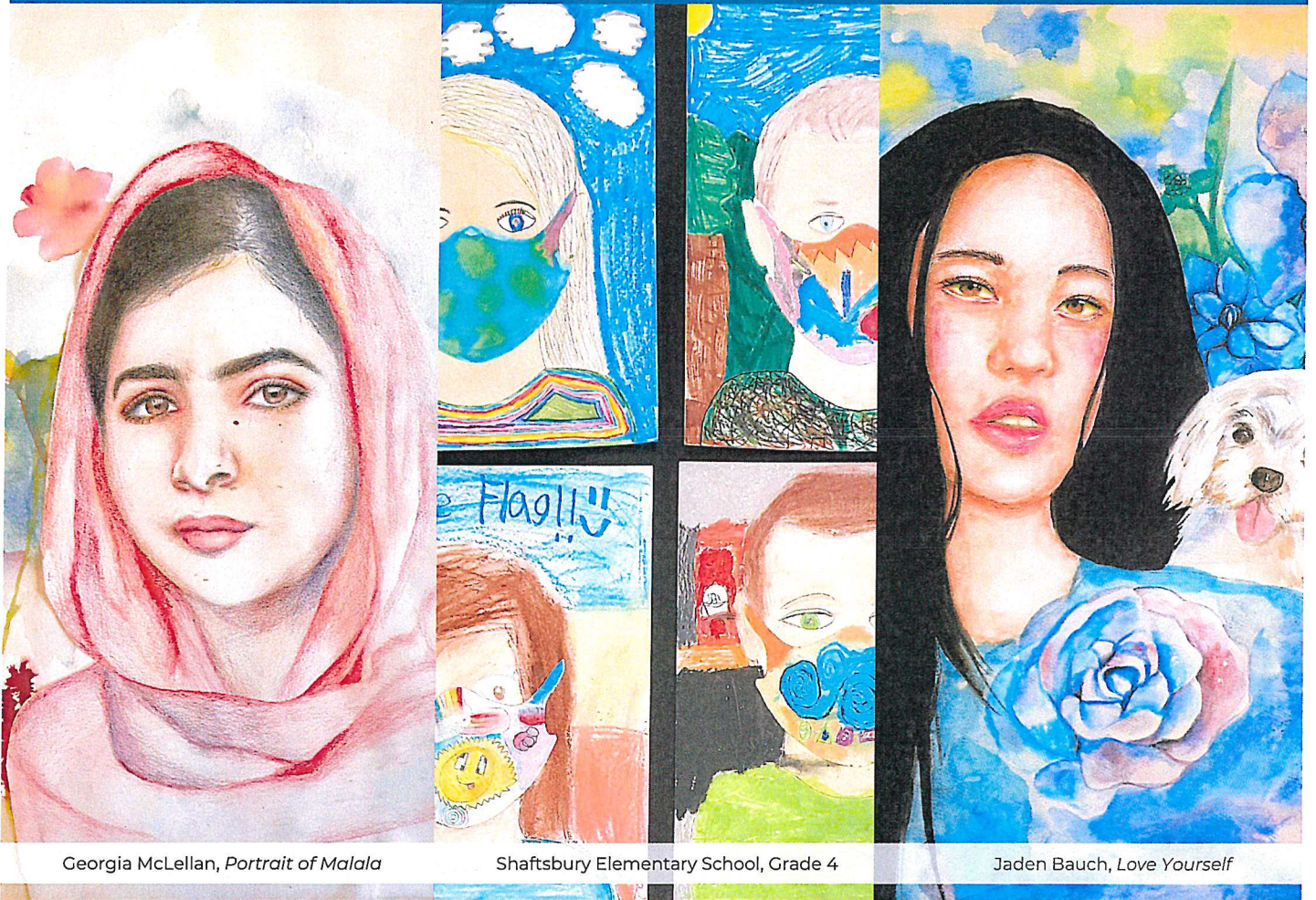


Kicking off Maple Season at Mettawee!
~ Breakfast for Lunch ~

ART FROM THE SCHOOLS

LONG TRAIL SCHOOL IB SENIOR SHOW
MARCH 3 - MARCH 11

ALL SCHOOLS AND HOMESCHOOLERS
MARCH 20 - APRIL 22



Featuring works by local students

ELIZABETH DE C. WILSON MUSEUM

OPEN SAT 10 - 4 & SUN 12 - 5 • WED - FRI BY REQUEST

For more information, visit www.svac.org/class/art-from-the-schools-2021

Becoming an Animal Tracker

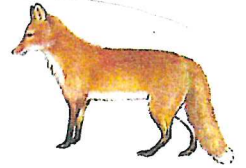
Can you spot these wild animal tracks? Check off the list and return to Pawlet Public Library, 141 School Street, Pawlet, Vermont for a prize!

☐

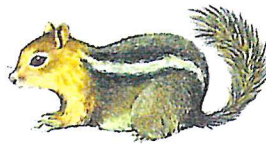
Gray Squirrel

☐

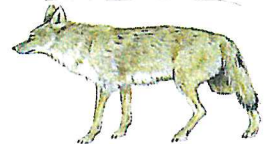
Red Fox

☐

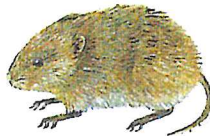
Chipmunk

☐

Coyote

☐

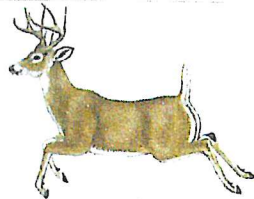
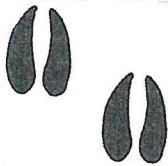
Meadow Vole

☐

Raccoon

☐

White-tailed Deer

☐

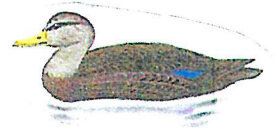
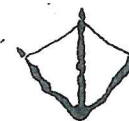
Black Bear

☐

Eastern Cottontail

☐

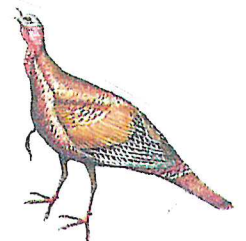
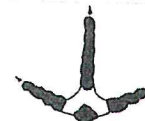
Duck

☐

Bobcat

☐

Wild Turkey





Thanks to generous community, state, and federal support, the Vermont Foodbank is able to extend the Vermont Farmers to Families Food Box program through March.

In partnership with the Abbey Group and Global Trading Enterprises, Farmers to Families food boxes will continue to be available at daily food distributions throughout the state through March.

To keep wait times to a minimum, reservations will be required for the distributions. To register and see the dates and locations, please visit <https://humanresources.vermont.gov/food-help> or call 802-476-0316 for assistance.

New distribution dates and locations will be posted regularly –please continue to check back if you do not see the location or date you are looking for. March dates will be posted soon.

Each reservation will receive 1 box with about 30 lbs of food, including fresh produce, dairy products, and meat.

You are welcome to pick up food for other families who are not able to make it to the pickup site, just be sure to make a separate reservation for each household you would like to pick up for. Each reservation is for one box of food.